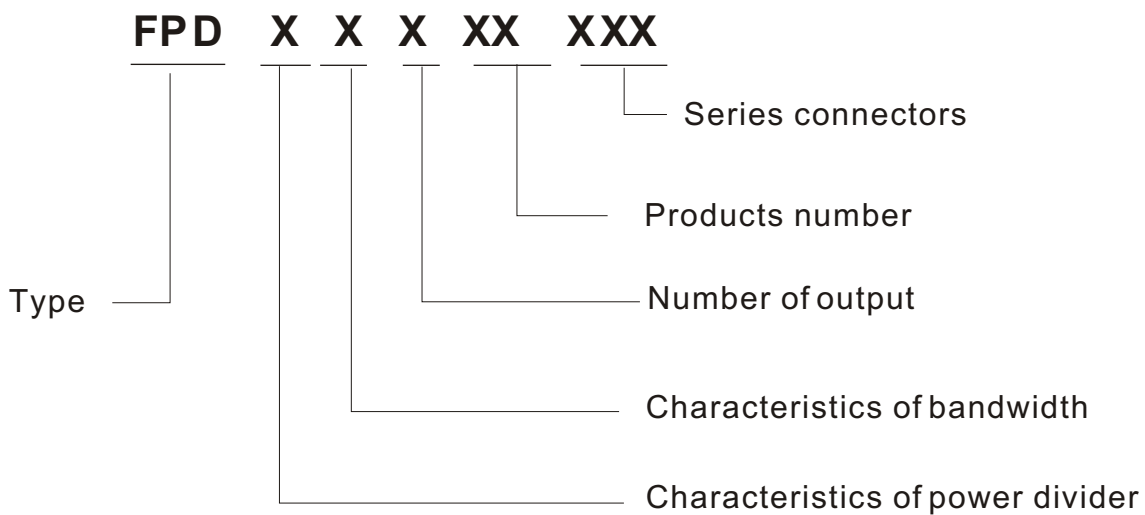


Splitter

Splitter is a kind of microwave component that can divide a signal into two ways or many ways of equal or unequal energy. It is indispensable component in microwave communication.

CLEC offers variety of types Splitter, such as 2-way, 3-way and 4-way etc. The products have small size and competitive price, especially suit to GSM, CDMA, PHS and 3G etc. system indoor

The name of the power divider consisted of these parts:



Main code Pd: means Power Divider.

Characteristics of power divider: 1 means equal divide
0 means unequal divide.

Characteristics of bandwidth: 1 means wideband
0 means narrow band.

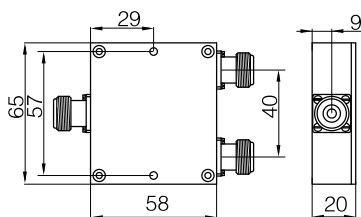
NO. of output: 2 means 2-way 3 means 3-way 4 means
4-way.....

Products code : The configuration code is sequent
from 01.

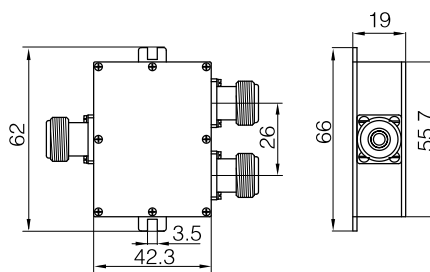
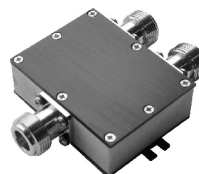
Series connector: It's name from the code of the RF
connector which is fix To the PD, number of the letter
depends on products' type. e.g if there is different
series RF connector fix to the PD ,use the "/" to
separate them.

Power Splitter

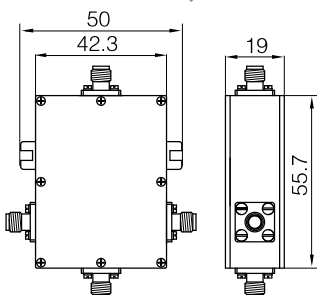
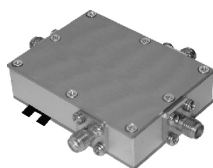
| Specifications | FPD-11201 | FPD-11203 | FPD-11302 | FPD-11401 |
|---------------------------|-----------|--------------|--------------|-----------|
| Numeral | 2 | 2 | 3 | 4 |
| Operating Frequency (Mhz) | 800-1000 | 800-2200 | 1700-2500 | 1300-2000 |
| Insertion Loss (dB) | ≤3.5 | ≤3.5 | ≤5.2 | ≤6.5 |
| Return Loss (dB) | ≥20 | | | |
| Isolation (dB) | ≥20 | | | |
| Power Capacity (W) | 20 | | | |
| Dimension (mm) | 65x58x20 | 55.7x42.3x19 | 55.7x42.3x19 | 104x71x20 |
| Connectors | N or SMA | | | |



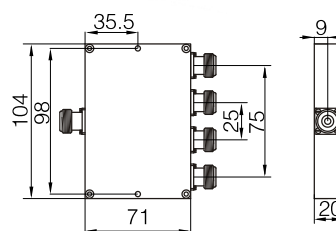
FPD-11201



FPD-11203



FPD-11302



FPD-11401