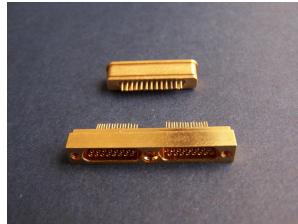


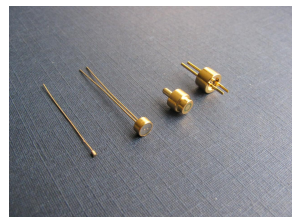
Glass to Metal Hermetic Seal Products



RF Connector



Micro D Connector



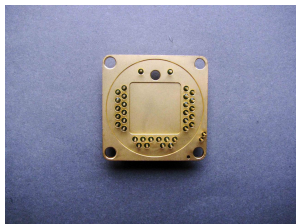
Electrode Plug



Feedthroughs

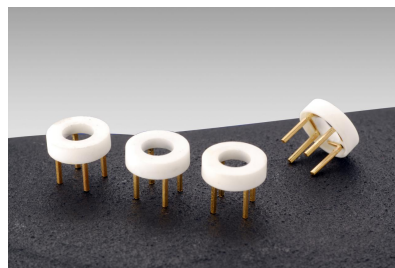
- Body Material: Kovar, Stainless Steel, CR steel or other
- Glass Material: Borosilicate, Barium Alkali or other
- Pin Material: 52 Ni/Fe Alloy, 4J29, Kovar, or other
- Finish: Gold or Nickel plated
- Leak rate: 1×10^{-8} or as requested
- High density pin seal is available

底色调整



Other Customize Products

Ceramic Metallization & Brazing



Features

Leak: $< 1 \times 10^{-11}$ Pa.M³/s or as requested
 Mechanical Strength: > 1200 Kg/cm²
 Thermal Shock: 850 degree C
 Voltage surge: 7000V

Joining types

Ceramic + Mo/Mn Metallized + plating Ni
 Ceramic + Mo/Mn Metallized + plating Ag
 Ceramic + Mo/Mn Metallized + plating Au
 Ceramic + printing Ag

High Temperature & High Pressure Connector



Temperature	-60 to 200 Degree C
Pressure	0 to 25000 psi
Body	Molded Plastic or Metal
Contact	Beryllium Copper, Gold /Nickel Plated
Insulation	Aromatic Polyether Plastic or other
"O"-Ring	FKM or other
Insulation Resistance	1000Mohm, 1000VDC,



CLEC Group

ChuangLian Electronic Component (Group) Co.,Ltd.

No.3,Dianzixi Street,Xi'an 710065,China.

Phone: +86-29-88220746 / 68901529

Fax: +86-29-88260919 / 88233853

E-mail: clec@clecgroup.com

Homepage: www.clecgroup.com