



CLEC Ceramic Metallization & hermetic sealing technology

CLEC supply custom Metallized ceramic and braze assembly prototype to high volume production capacity.

Applications

Feed-through insulators, Headers, Housings, High-power receptacles, high-performance semiconductors, Insulating discs, Insulator rings and cylinders, Precipitator products, Power switches, Traveling wave tubes, Vacuum interrupters, Windows, Power grid tubes, X-ray tubes and others.

Typical Features

Leak: $<1 \times 10^{-8}$ CC/SEC or as requested
Mechanical Strength: >1200 Kg/cm²
Thermal Shock: 850 degree C
Voltage surge: 7000V

Ceramic + Mo/Mn Metallized + plating Ni/Au
Brazing: Au/Sn, Ag/Cu or others
Metal Materials: Kovar, SST, Ti or other
Window Materials: Sapphire or Germanium

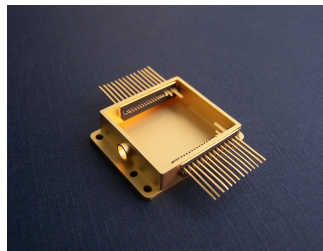
Special types are available according to customer's drawings or samples.



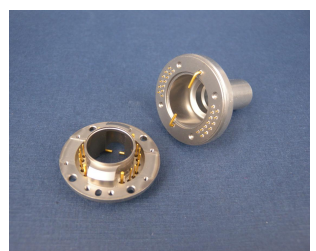
Micro-D Connector



Multi Pin Package



OEP Package



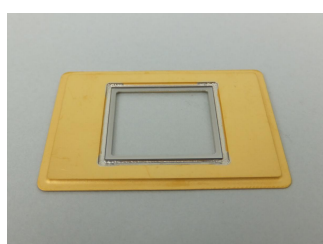
Titanium Package



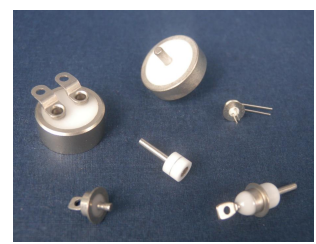
Metallized ALN



50 ohm RF Connector



Sapphire Window A/R Coated



SST / Covar Package

CLEC Group
ChuangLian Electronic Component (Group) Co.,Ltd.

No.3,Dianzixi Street,Xi'an 710065,China.

Phone: +86 29 88220746 / 68901529

Fax: +86 29 88260919 / 88233853

E-mail: clec@clecgroup.com

Homepage: www.clecgroup.com