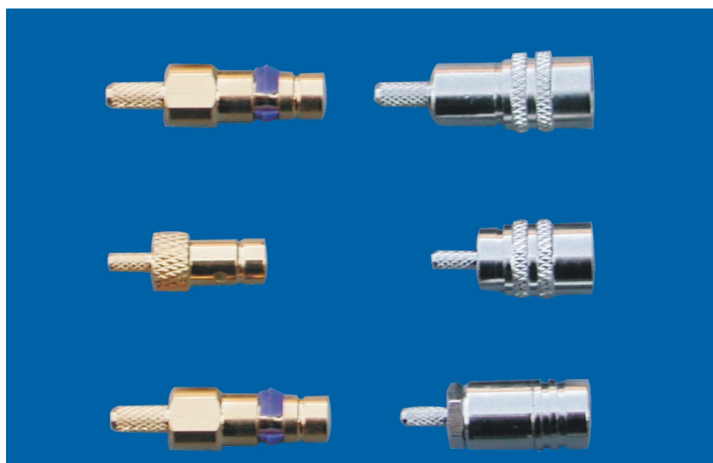


## SERIES SMZ RF COAXIAL CONNECTORS



Series SMZ push-pull self-latching style RF coaxial connector is changed based on series SMB.

### Key performance

Characteristic Impedance :  $50\ \Omega$

Frequency range : 0~4GHz

Contact resistance :

Center conductor  $\leq 6.0\text{m}\ \Omega$

Out conductor  $\leq 2.0\text{m}\ \Omega$

Insulation resistance :  $\geq 1000\text{M}\ \Omega$

Insulator voltage withstanding : 1000V

VSWR :  $\leq 1.30$

Connector durability : 500 cycles

Applicable spec/std : GJB681A (MIL-C-39012)

### Material

Center contacts:

Male---brass, gold plated.

Female---beryllium copper, gold plated

Bodies other metal parts:

brass, gold plated

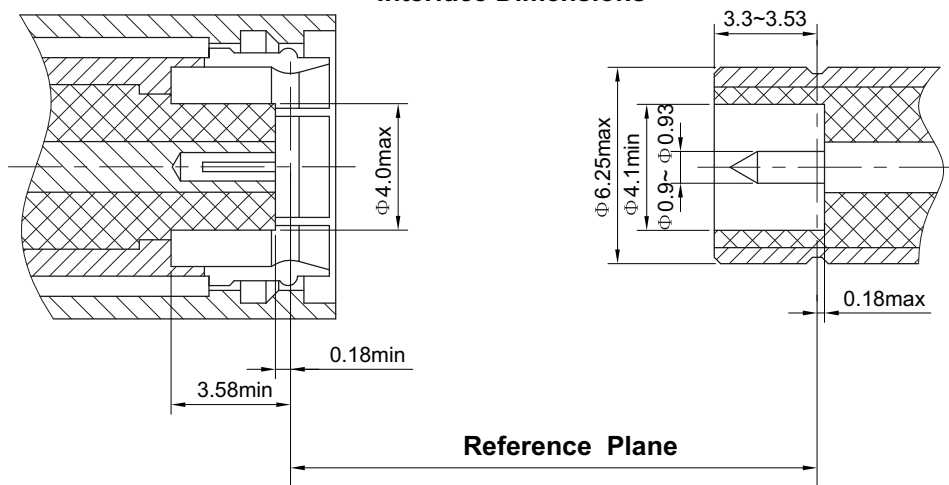
Insulators: Teflon

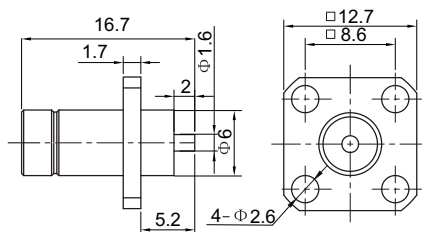
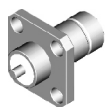
Crimp ferrule: copper, nickel plated.

Gasket and seal rings: silicone rubber

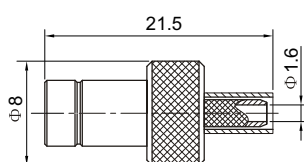
Heat-shrink tubing: thermofit plastic.

### Interface Dimensions

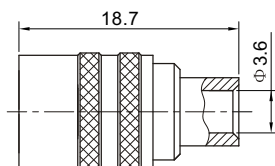




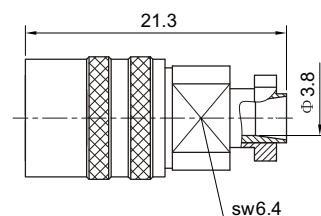
Type	part number	Note
SMZ-JFD	2110-0000	



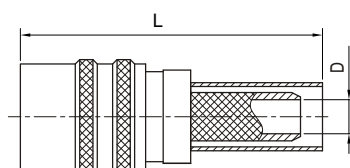
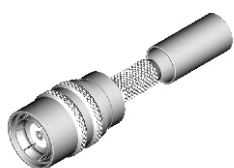
Type	part number	suitable cable	Note
SMZ-J3	2110-6500	3	



Type	part number	suitable cable	Note
SMZ-KB3	2120-6600		



Type	part number	suitable cable	Note
J.SMZ-K5	2120-6502		



Type	part number	L	D	Note
SMZ-K4Y	2120-6501	30.2	Φ2.3	
SMZ-K5Y	2120-6500	28.5	Φ3.1	