

## SERIES SMP RF COAXIAL CONNECTORS



Series SMP is a push-on and snap-on style connector. The advantages are miniature size, light weight, convenient usages and high frequency range. In its snap-on configuration, the SMP interface is available in two levels of detent each with different mate and de-mate forces. The two levels are full detent and limited detent.

### Key performance

Characteristic Impedance :  $50 \Omega$   
 Frequency range :  $0 \sim 26.5 \text{ GHz}$   
 Contact resistance :  
     Center conductor  $\leq 6.0 \text{ m}\Omega$   
     Out conductor  $\leq 2.0 \text{ m}\Omega$   
 Insulation resistance :  $\geq 1000 \text{ M}\Omega$   
 Insulator voltage withstanding :  $500 \text{ V}$   
 VSWR :  $\leq 1.25$   
 Connector durability :  $500 \text{ cycles}$

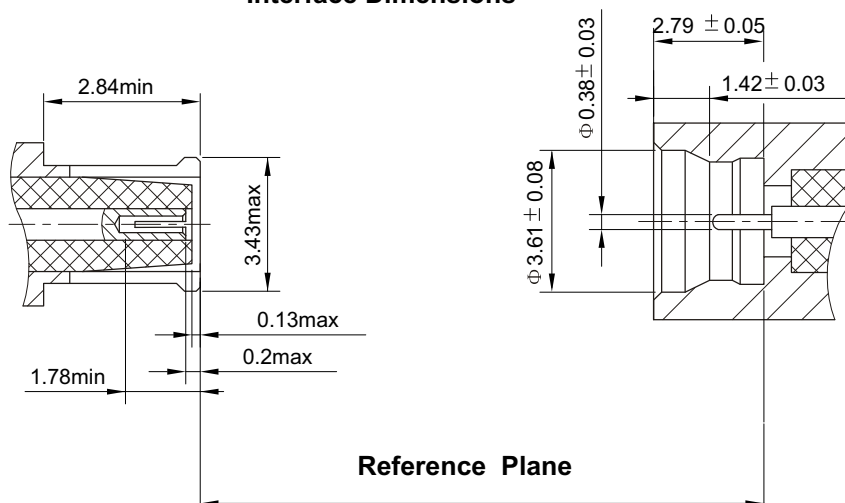
Application spec/std.: GJB681A/MIL-C-39012/CECC22340

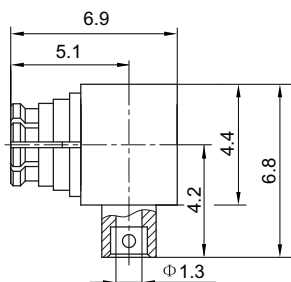
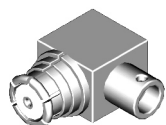
Applicable sc MIL-C-39012

### Material

Center contacts:  
     Male---brass, gold plated.  
     Female---beryllium copper, gold plated  
 Bodies and other metal parts:  
     brass, gold plated  
 Insulators: Teflon  
 Crimp ferrule: copper, nickel plated.  
 Gasket and seal rings: silicone rubber  
 Heat-shrink tubing: thermofit plastic.

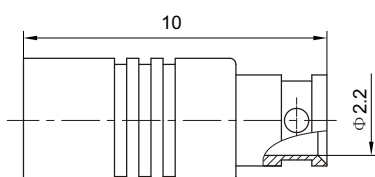
### Interface Dimensions





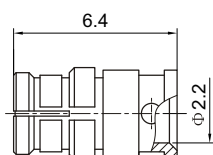
Type	part number	suitable cable	Note
------	-------------	----------------	------

SMP-KWB1	1641-6600	B1	
----------	-----------	----	--



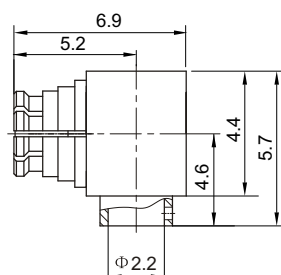
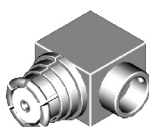
Type	part number	suitable cable	Note
------	-------------	----------------	------

SMP-JB2A	1611-6601	B2	
----------	-----------	----	--



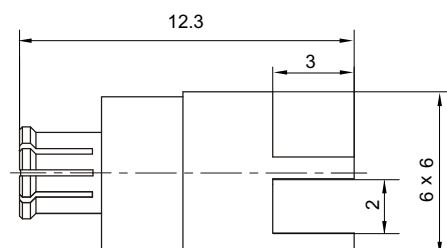
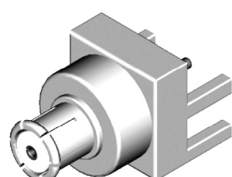
Type	part number	suitable cable	Note
------	-------------	----------------	------

SMP-KB2	1621-6600	B2	
---------	-----------	----	--



Type	part number	suitable cable	Note
------	-------------	----------------	------

SMP-KWB2A	1641-6602	B2	
-----------	-----------	----	--



Type	part number	Note
------	-------------	------

SMP-KHD1	1621-5801	
----------	-----------	--