

Key performance

Frequency range : 0~4GHz

Center conductor $\leq 1.5\text{m } \Omega$

Out conductor $\leq 1.0\text{m } \Omega$

Insulation resistance : $\geq 5000M \Omega$

Insulator voltage withstanding : 1500V

VSWR : ≤ 1.30

Connector durability :500 cycles

Applicable spec/std : J.FD/Q2003-01

Center contacts:

Male---brass, gold plated.

Female---beryllium copper, gold plated

Bodies other metal parts:

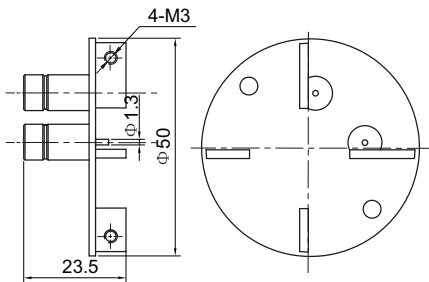
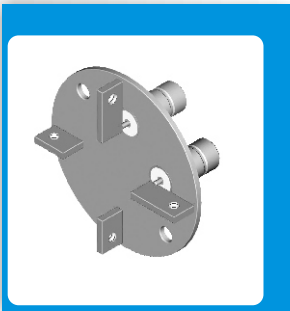
brass, gold plated

Insulators: Teflon

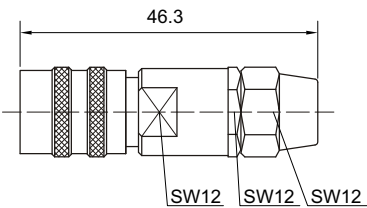
Crimp ferrule: copper, nickel plated.

Gasket and seal rings: silicone rubber

Heat-shrink tubing: thermofit plastic.



Type	part number	Note
J.STWX8-JJFD	2711-1901	body nickel plated



Type	part number	suitable cable	Note
J.STWX8-K501	2721-6701	501	body nickel plated front covering, stainless steel